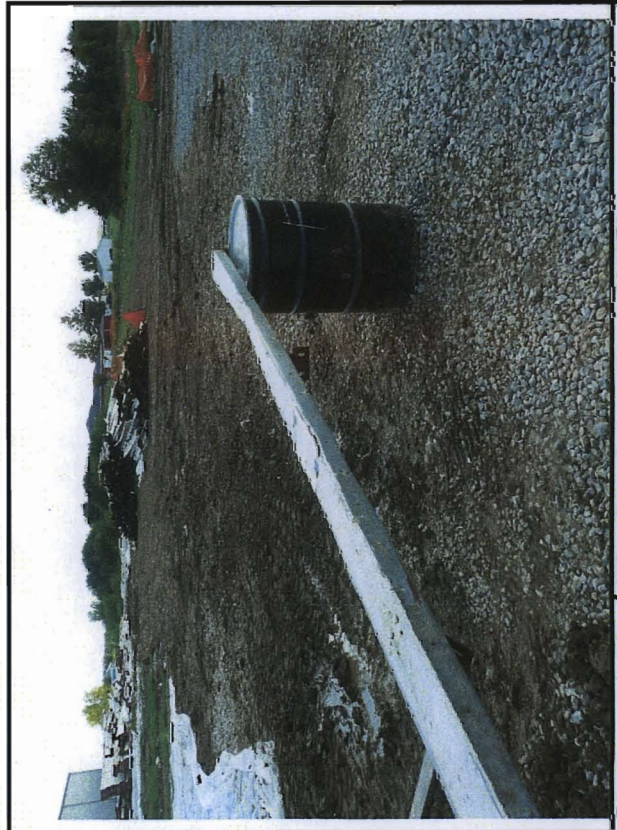


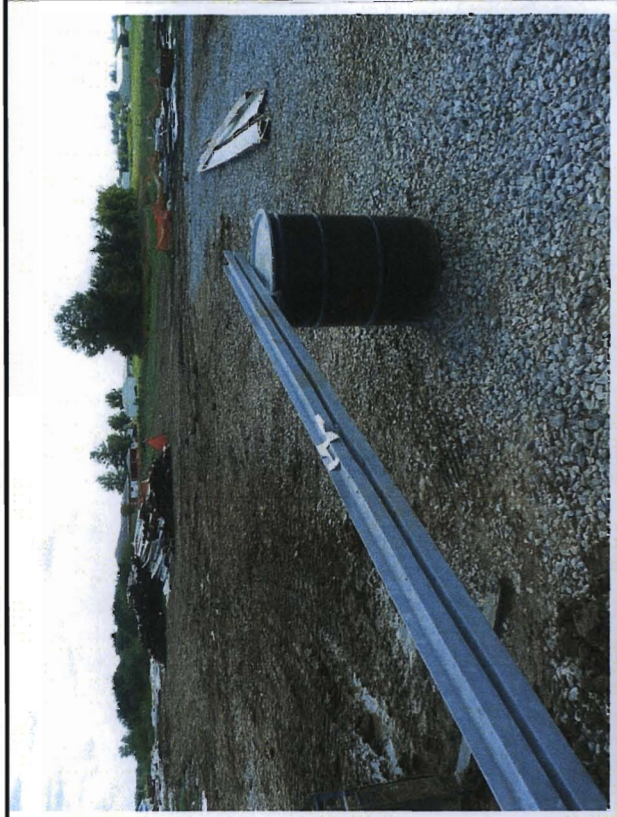
Photograph 77 Wipe Sample Location # 2066B2



Photograph 78 Wipe Sample Location # 1955T9 & 10



Photograph 79 Wipe Sample Location # 2033T24

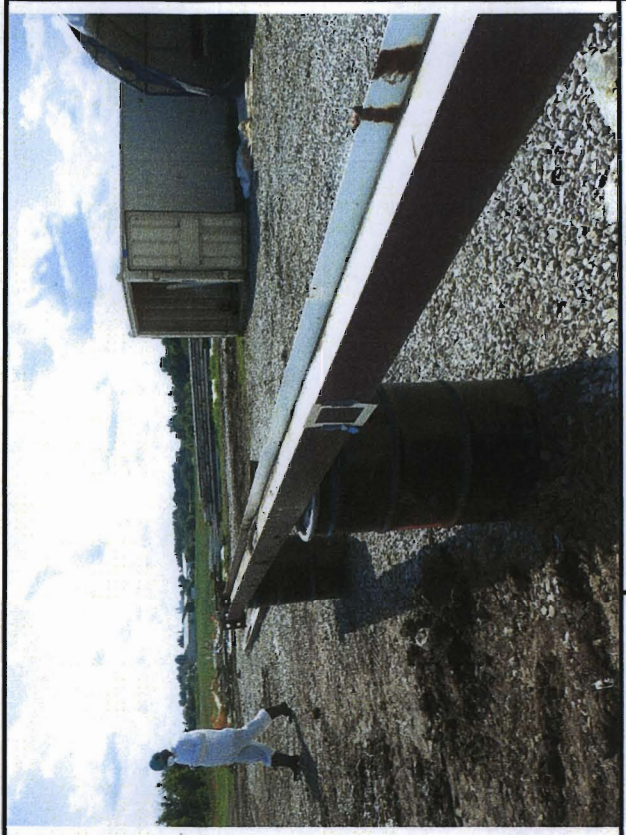


Photograph 80 Wipe Sample Location # 1819R23



Photograph 81

Wipe Sample Location # 1809R44



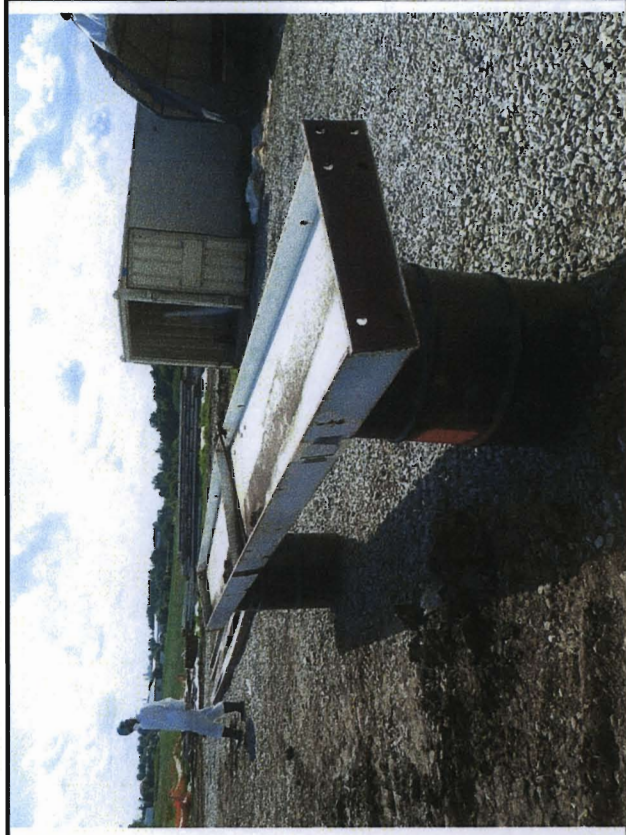
Photograph 82

Wipe Sample Location # 644R55



Photograph 83

Wipe Sample Location # 654B7



Photograph 84

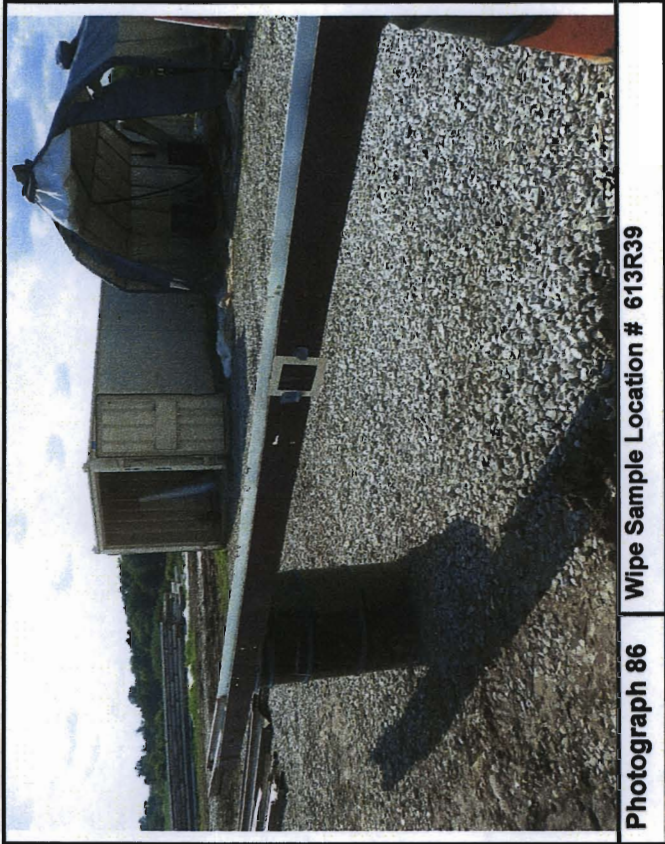
Wipe Sample Location # 1051R42

D0715



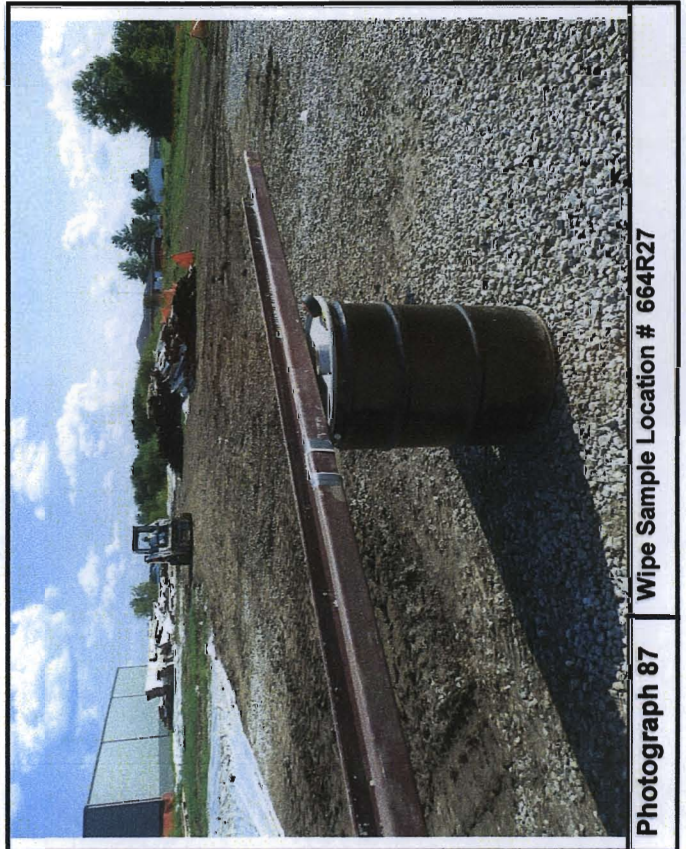
Photograph 85

Wipe Sample Location # 699B23



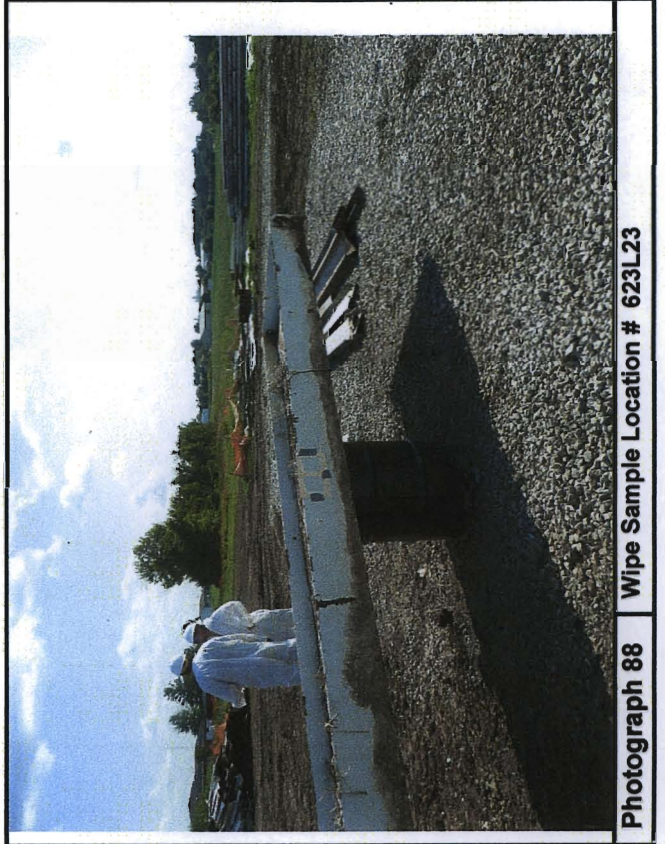
Photograph 86

Wipe Sample Location # 613R39



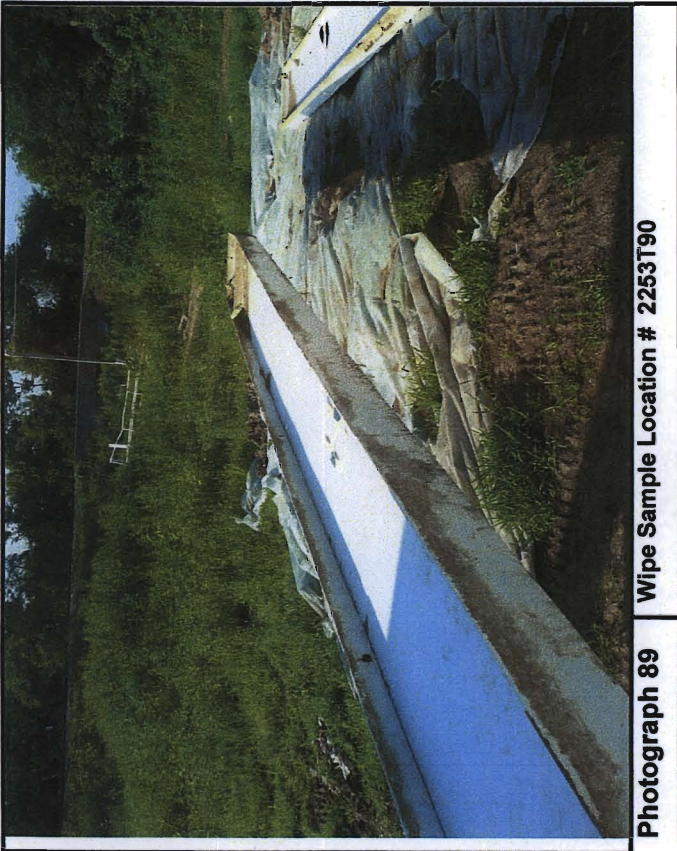
Photograph 87

Wipe Sample Location # 664R27



Photograph 88

Wipe Sample Location # 623L23



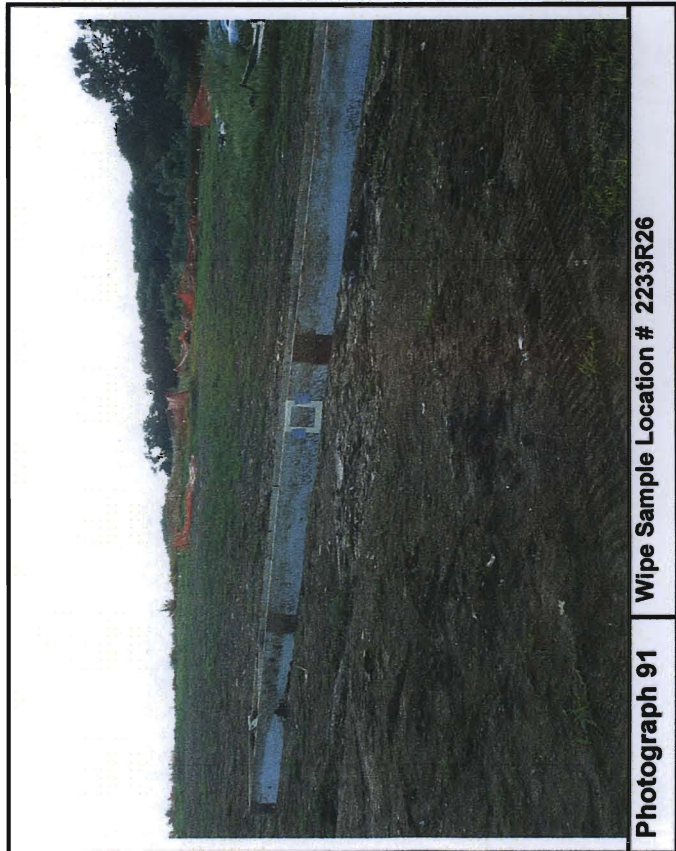
Photograph 89

Wipe Sample Location # 2253T90



Photograph 90

Wipe Sample Location # 2243R35



Photograph 91

Wipe Sample Location # 2233R26



Photograph 92

Wipe Sample Location # 749T31

Composite Soil Sampling – August 12, 2009
Photographs (93 – 125)

D0718

**SAMPLE LOG - 5
GRID SOIL SAMPLE LOG
PCB SAMPLING FOR DICO INC.
SIM – OTTUMWA PCB SITE**

Date: August 12, 2009

(Grid approved by USEPA Personnel)

Photo No.	Sample No.	Sample Designation	Sample Description	Time Sampled
93	1	C1	Composite soil sample located on the southeastern corner of area C. It comprises of 9 sampling points (~1" deep) around composite stake C1.	8:00
94	2	C2	Composite soil sample west of C1 comprising of 8 sampling points (~1" deep). It excludes southwest sampling point which falls outside area C boundary.	8:18
95	3	C3	Composite soil sample west of C2 comprising of 5 sampling points (~1" deep). It excludes southern row and middle west sampling point which falls outside area C boundary.	8:45
96	4	C4	Composite soil sample north of C1 comprising of 9 sampling points (~1" deep) around composite stake C4.	8:57
97	5	C5	Composite soil sample north of C2 and west of C4 comprising of 9 sampling points (~1" deep) around composite stake C5.	9:15
98	6	C6	Composite soil sample north of C3 and west of C5 comprising of 9 sampling points (~1" deep) around composite stake C6.	9:27
99	7	C7	Composite soil sample north of C4 comprising of 9 sampling points (~1" deep) around composite stake C7.	9:40
100	8	C8	Composite soil sample north of C5 and west of C7 comprising of 9 sampling points (~1" deep) around composite stake C8.	9:57
101	9	C9	Composite soil sample north of C6 and west of C8 comprising of 9 sampling points (~1" deep) around composite stake C9.	10:11
102	10	C10	Composite soil sample north of C7 comprising of 9 sampling points (~1" deep) around composite stake C10.	10:24
102	11	C10 Duplicate	Duplicate of Composite sample C10 (C10 duplicate was also provided to EPA)	10:24
103	12	C11	Composite soil sample north of C8 and west of C10 comprising of 9 sampling points (~1" deep) around composite stake C11.	11:07
104	13	C12	Composite soil sample north of C9 and west of C11 comprising of 9 sampling points (~1" deep) around composite stake C12.	11:23
105	14	C13	Composite soil sample north of C10 comprising of 9 sampling points (~1" deep) around composite stake C13.	11:39
106	15	C14	Composite soil sample north of C11 and west of C13 comprising of 9 sampling points (~1" deep) around composite stake C14.	12:04
107	16	C15	Composite soil sample north of C12 and west of C14 comprising of 9 sampling points (~1" deep) around composite stake C15.	12:23
108	17	C16	Composite soil sample north of C13 comprising of 9 sampling points (~1" deep) around composite stake C16.	12:39
109	18	C17	Composite soil sample north of C14 and west of C16 comprising of 9 sampling points (~1" deep) around composite stake C17.	13:00
110	19	C18	Composite soil sample north of C15 and west of C17 comprising of 8 sampling points (~1" deep) around composite stake C18. It excludes northwest sampling point which falls outside area C boundary.	13:11
111	20	C19	Composite soil sample north of C16 (slightly offset to west) comprising of 6 sampling points (~1" deep). It excludes the northern row sampling points which falls outside area C northern boundary.	13:34
112	21	C20	Composite soil sample north of C17 (slightly offset to west) and west of C19 comprising of 5 sampling points (~1" deep). It excludes the northern row and one western sampling point which falls outside area C northern and western boundary.	13:50
112	22	C20 Duplicate	Duplicate of Composite sample C20 (C20 duplicate was also provided to EPA)	13:50
113	23	C21	Composite soil sample west of C6 comprising of 5 sampling points (~1" deep). It excludes western row and one south sampling point which falls outside area C western and southern boundary.	14:04

*Sunny, hot and muggy (approx. 85°F)

D0719

**SAMPLE LOG - 5
GRID SOIL SAMPLE LOG
PCB SAMPLING FOR DICO INC.
SIM - OTTUMWA PCB SITE**

Date: August 12, 2009

(Grid approved by USEPA Personnel)

Photo No.	Sample No.	Sample Designation	Sample Description	Time Sampled
114	24	B1	Composite soil sample located on the southeastern corner of area B. It comprises of 9 sampling points (~1" deep) around composite stake B1.	16:09
115	25	B2	Composite soil sample west of B1 comprising of 6 sampling points (~1" deep). It excludes the western row sampling points which falls outside area B western boundary.	16:21
116	26	B3	Composite soil sample north of B1 comprising of 9 sampling points (~1" deep) around composite stake B3.	16:48
116	27	B3 Duplicate	Duplicate of Composite sample B1 (B1 duplicate was also provided to EPA)	16:48
117	28	B4	Composite soil sample west of B3 comprising of 6 sampling points (~1" deep). It excludes the western row sampling points which falls outside area B western boundary.	17:00
118	29	B5	Composite soil sample north of B4 comprising of 3 sampling points (~1" deep) along the northern boundary of area B	17:09
119	30	A1	Composite soil sample located on the northeastern corner of area A. It comprises of 4 sampling points (~1" deep). It excludes the northern, eastern, and western rows sampling points which falls outside area A.	17:47
119	31	A1 Duplicate	Duplicate of Composite sample A1 (A1 duplicate was also provided to EPA)	17:47
120	32	A2	Composite soil sample south of A1 comprising of 6 sampling points (~1" deep). It excludes the eastern row sampling points which falls outside area A eastern boundary.	18:02
121	33	A3	Composite soil sample west of A2 comprising of 6 sampling points (~1" deep). It excludes the western row sampling points which falls outside area A western boundary.	18:15
122	34	A4	Composite soil sample south of A2 comprising of 6 sampling points (~1" deep). It excludes the eastern row sampling points which falls outside area A eastern boundary.	18:28
123	35	A5	Composite soil sample south of A3 and west of A4 comprising of 6 sampling points (~1" deep). It excludes the western row sampling points which falls outside area A western boundary.	18:40
124	36	A6	Composite soil sample south A4 comprising of 4 sampling points (~1" deep). It excludes the southern and eastern rows sampling points which falls outside area A boundary.	18:50
125	37	A7	Composite soil sample south of A5 and west of A4 comprising of 6 sampling points (~1" deep). It excludes the southern row sampling points which falls outside area A southern boundary.	19:03

*Sunny, hot and muggy (approx. 85°F)

D0720



Photograph 93

Composite Soil Sample - C1



Photograph 94

Composite Soil Sample - C2



Photograph 95

Composite Soil Sample - C3



Photograph 96

Composite Soil Sample - C4



Photograph 97 Composite Soil Sample – C5



Photograph 98 Composite Soil Sample – C6



Photograph 99 Composite Soil Sample – C7



Photograph 100 Composite Soil Sample – C8



Photograph 101 Composite Soil Sample – C9



Photograph 102 Composite Soil Sample – C10



Photograph 103 Composite Soil Sample – C11



Photograph 104 Composite Soil Sample – C12



Photograph 105 Composite Soil Sample – C13



Photograph 106 Composite Soil Sample – C14



Photograph 107 Composite Soil Sample – C15



Photograph 108 Composite Soil Sample – C16



Photograph 109

Composite Soil Sample – C17



Photograph 110

Composite Soil Sample – C18



Photograph 111

Composite Soil Sample – C19



Photograph 112

Composite Soil Sample – C20



Photograph 113 Composite Soil Sample - C21



Photograph 114 Composite Soil Sample - B1



Photograph 115 Composite Soil Sample - B2



Photograph 116 Composite Soil Sample - B3

D0726



Photograph 117 Composite Soil Sample – B4



Photograph 118 Composite Soil Sample – B5



Photograph 119 Composite Soil Sample – A1



Photograph 120 Composite Soil Sample – A2



Photograph 121 Composite Soil Sample – A3



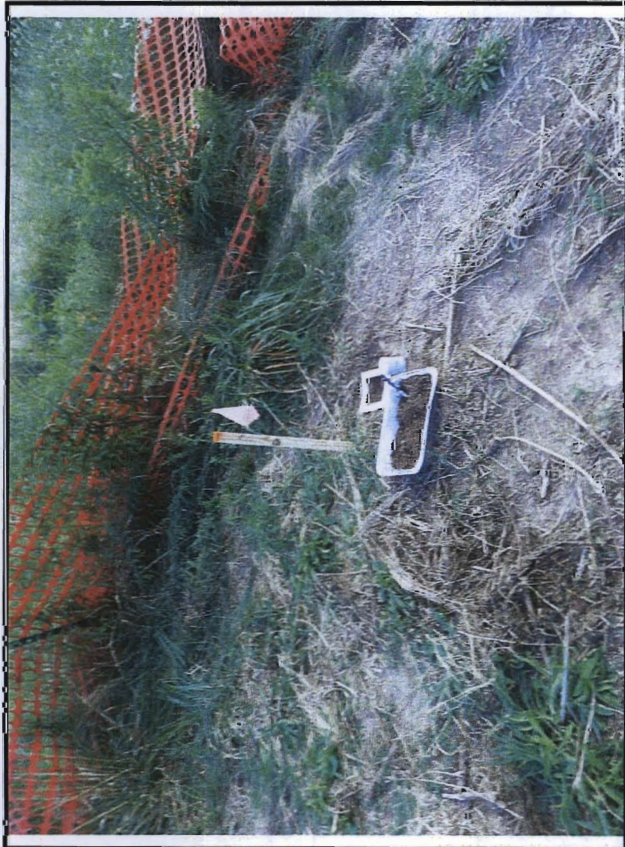
Photograph 122 Composite Soil Sample – A4



Photograph 123 Composite Soil Sample – A5



Photograph 124 Composite Soil Sample – A6



Photograph 125 Composite Soil Sample - A7